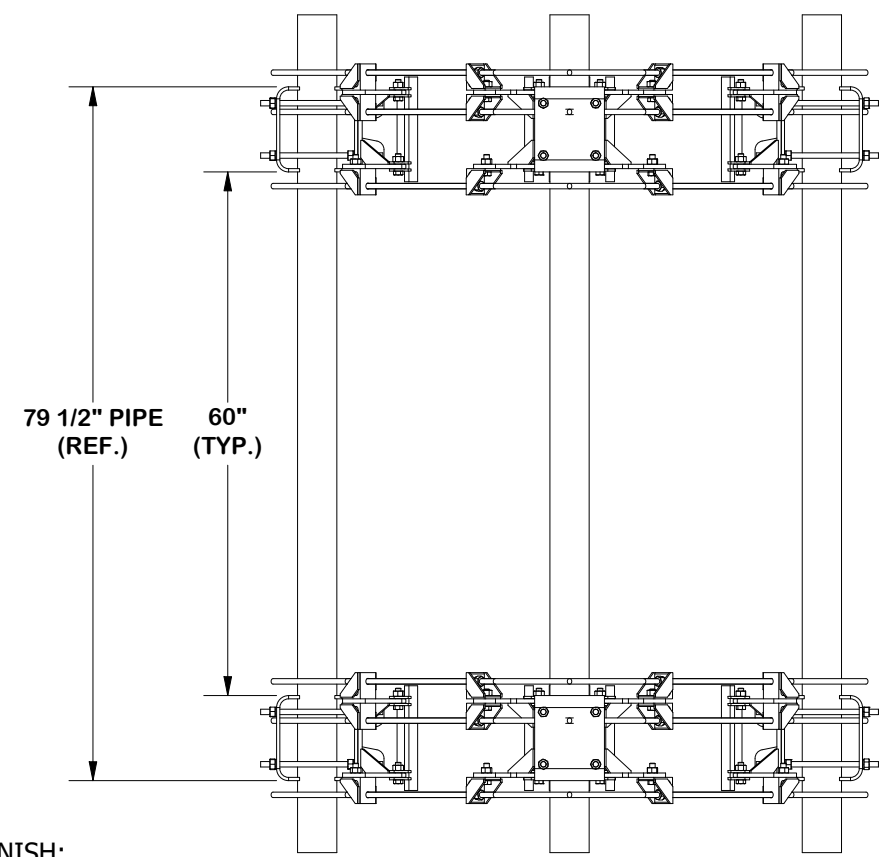
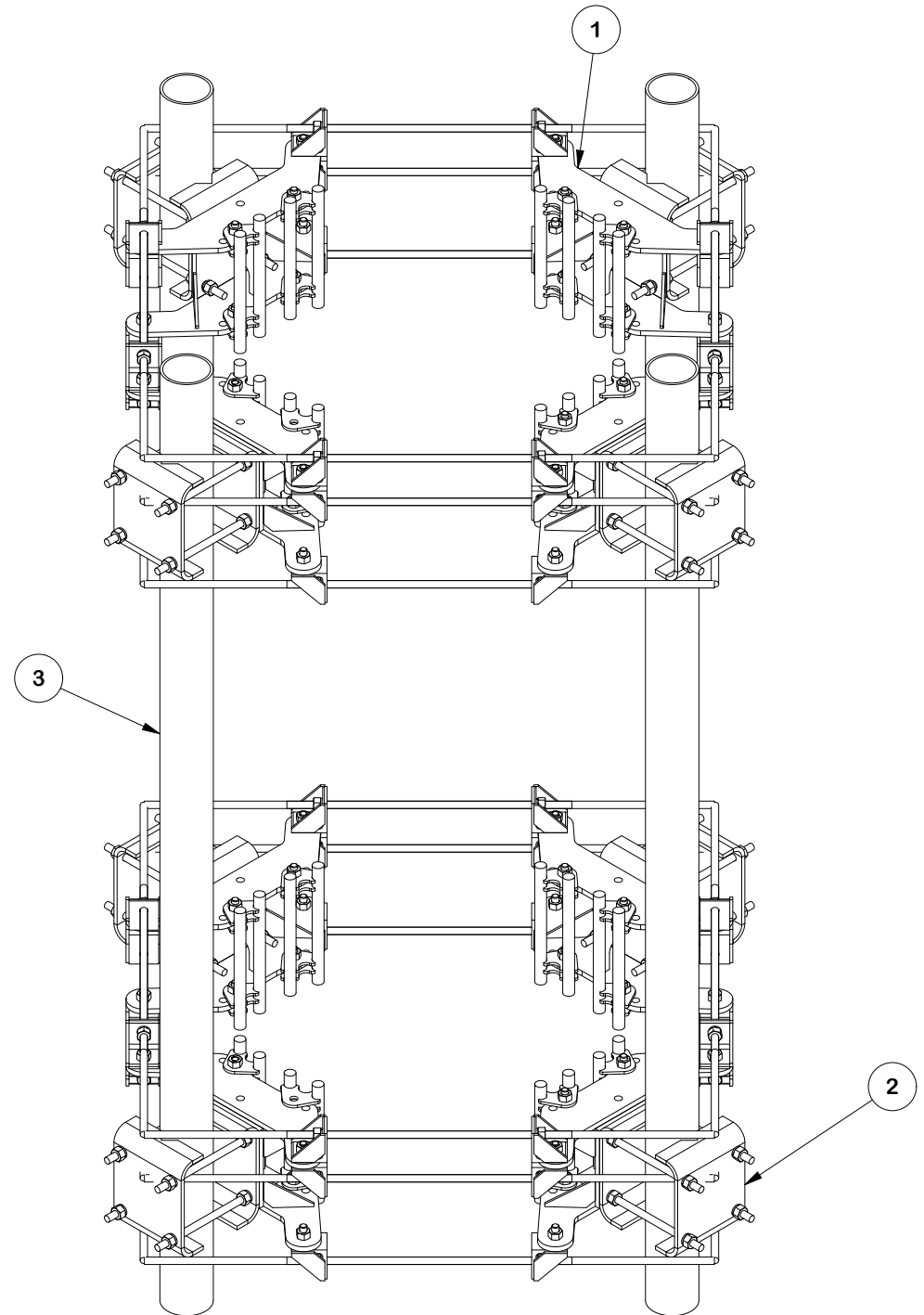


TOP DOWN REFERENCE VIEW



FINISH:
HOT DIP GALVANIZED.

PARTS LIST							
ITEM	QTY	PART NO.	BOX NO.	PART DESCRIPTION	LENGTH	UNIT WT.	NET WT.
1	2	FLX4-SD		FLEXIBLE RING MOUNT 4-SIDED SD ASSEMBLY		373.49	746.97
2	4	FMA2	P-FMA2	FLUSH MOUNT ADAPTER DUAL LEVEL		59.76	239.03
3	4	P496		4-1/2" X 96" SCH. 40 GALVANIZED PIPE	96 in	91.60	366.40
						TOTAL WT. #	1249.72



TOLERANCE NOTES

TOLERANCES ON DIMENSIONS, UNLESS OTHERWISE NOTED ARE:
 SAWED, SHEARED AND GAS CUT EDGES ($\pm 0.030"$)
 DRILLED AND GAS CUT HOLES ($\pm 0.030"$) - NO CONING OF HOLES
 LASER CUT EDGES AND HOLES ($\pm 0.010"$) - NO CONING OF HOLES
 BENDS AND ANGLES ARE $\pm 1/2$ DEGREE
 ALL OTHER MACHINING ($\pm 0.030"$)
 ALL OTHER ASSEMBLY ($\pm 0.060"$)

PATENT INFORMATION: WWW.SITEPRO1.COM/PATENTS

PROPRIETARY NOTE:
 THE DATA AND TECHNIQUES CONTAINED IN THIS DRAWING ARE PROPRIETARY INFORMATION OF VALMONT INDUSTRIES AND CONSIDERED A TRADE SECRET. ANY USE OR DISCLOSURE WITHOUT THE CONSENT OF VALMONT INDUSTRIES IS STRICTLY PROHIBITED.

DESCRIPTION
MONOPOLE 4 SECTOR FLEX COLLAR ATTACHMENT ASSEMBLY

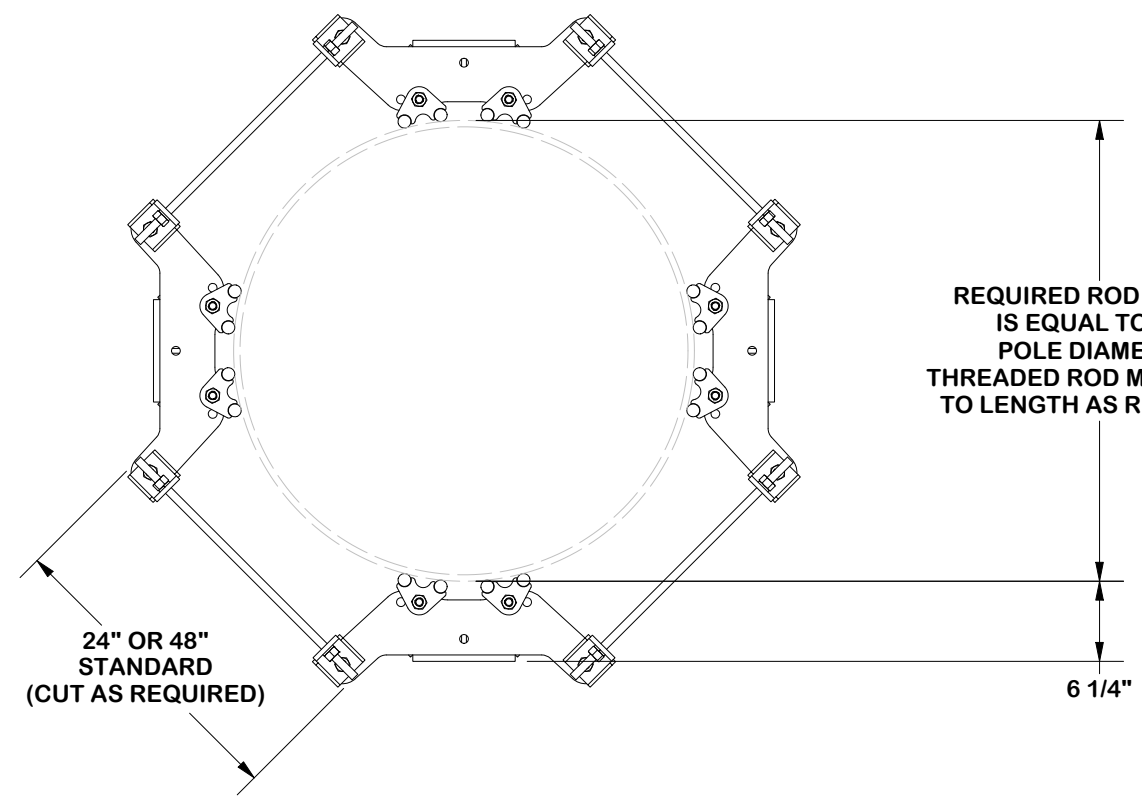
CPD NO. SP1	DRAWN BY SDR 8/13/2025	ENG. APPROVAL 8/14/2025
CLASS 87	SUB 03	DRAWING USAGE CUSTOMER
		CHECKED BY JET 8/14/2025



Engineering Support Team:
 sp1engineering@valmont.com

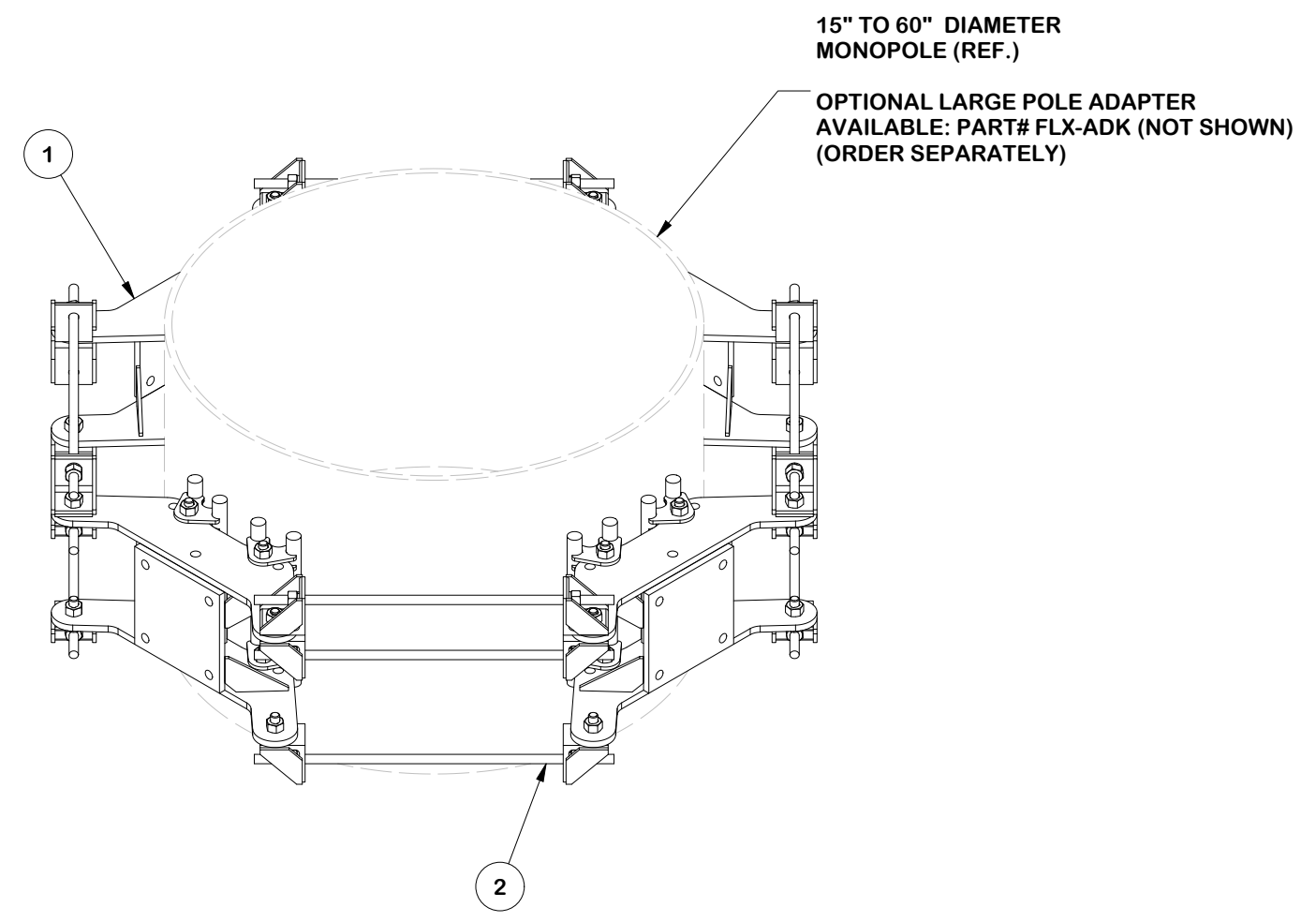
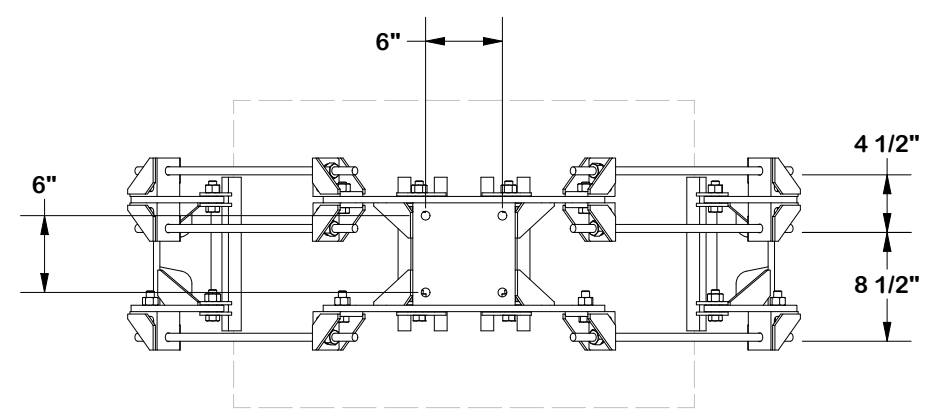
PART NO. MSFAA-FLX4
DWG. NO. MSFAA-FLX4

PARTS LIST						UNIT WT.	NET WT.
1	4	FLX-SDSS	P-FLX-SDSS	FLEXIBLE RING MOUNT SINGLE SECTOR ASSEMBLY	72.51	290.06	
2	1	UQB4-HDWE	P-UQB4-HDWE	HARDWARE KIT FOR 4-SIDED SD COLLAR	83.43	83.43	
TOTAL WT. #						373.49	



REQUIRED ROD LENGTH IS EQUAL TO THE POLE DIAMETER. THREADED ROD MAY BE CUT TO LENGTH AS REQUIRED.

- NOTES:**
1. LOCKNUTS CANNOT BE LOOSEND.
 2. TIGHTEN LOCKNUTS AFTER DESIRED POSITION (SEE PAGE 3).
 3. FITS 6" X 6" HOLE PATTERN



FINISH:
HOT DIP GALVANIZED.

TOLERANCE NOTES

TOLERANCES ON DIMENSIONS, UNLESS OTHERWISE NOTED ARE:
 SAWED, SHEARED AND GAS CUT EDGES ($\pm 0.030"$)
 DRILLED AND GAS CUT HOLES ($\pm 0.030"$) - NO CONING OF HOLES
 LASER CUT EDGES AND HOLES ($\pm 0.010"$) - NO CONING OF HOLES
 BENDS AND ANGLES ARE $\pm 1/2$ DEGREE
 ALL OTHER MACHINING ($\pm 0.030"$)
 ALL OTHER ASSEMBLY ($\pm 0.060"$)

PATENT INFORMATION: WWW.SITEPRO1.COM/PATENTS

DESCRIPTION

MONOPOLE 4 SECTOR FLEX COLLAR ATTACHMENT ASSEMBLY

SITE PRO 1

Engineering Support Team:
sp1engineering@valmont.com

A valmont COMPANY

REV	DESCRIPTION OF REVISIONS	CPD	BY	DATE
B	UPDATED NOTES AND ADDED CABLE GUIDE REF	SP1	ADB	12/11/2025
A	CHANGED KIT	SP1	NSP	11/12/2024

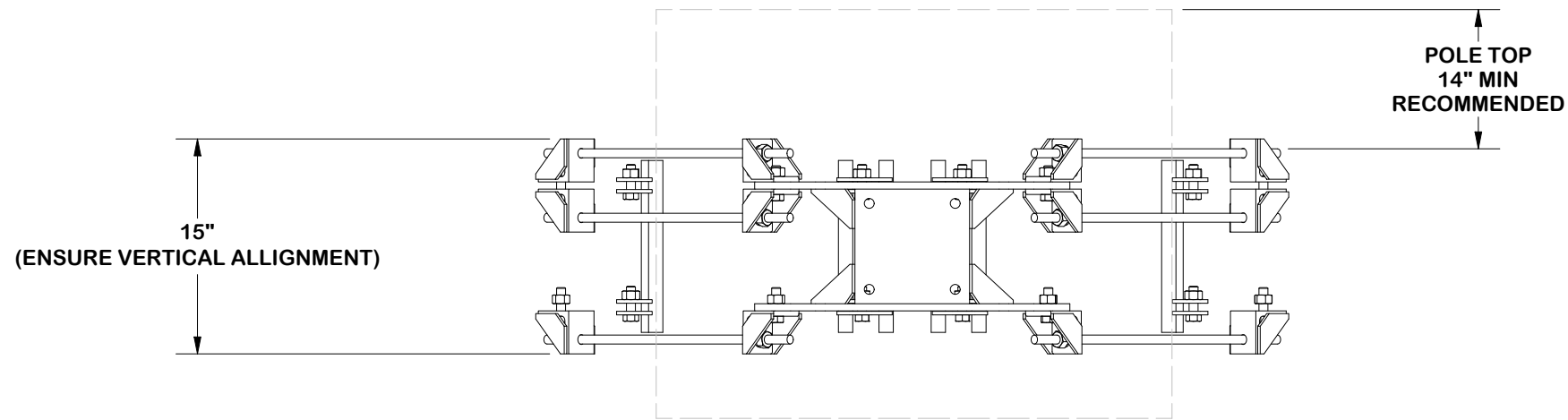
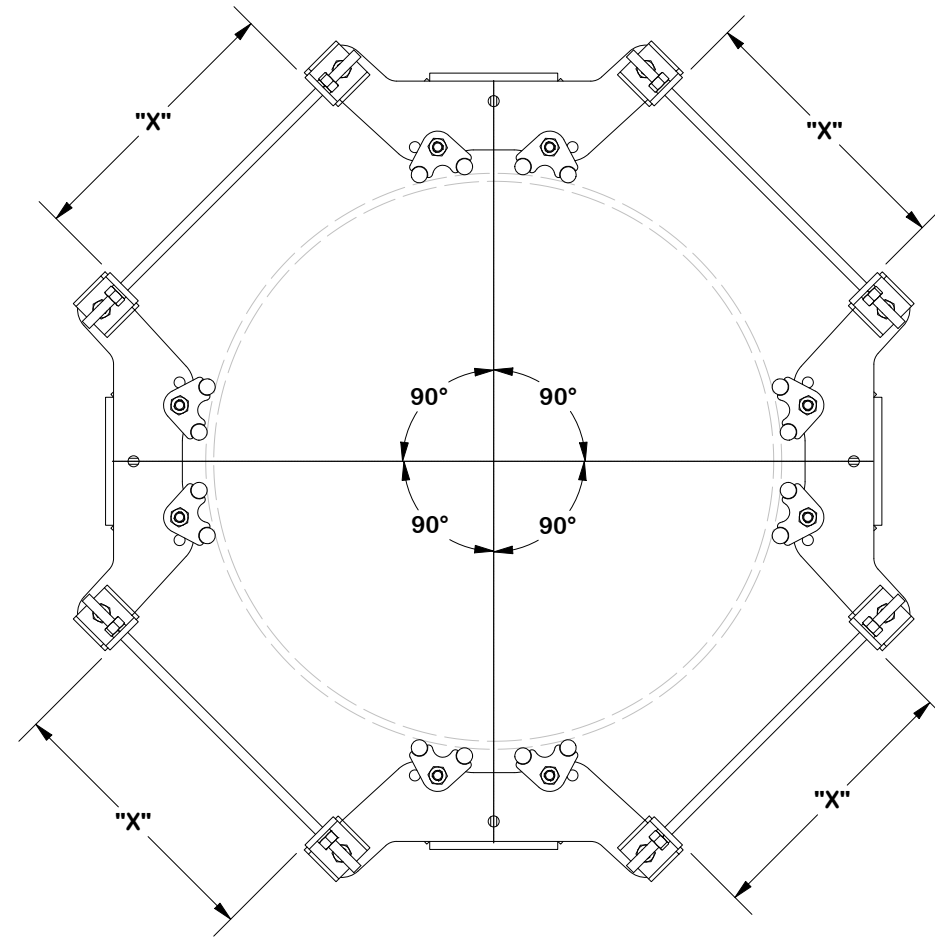
PROPRIETARY NOTE:
THE DATA AND TECHNIQUES CONTAINED IN THIS DRAWING ARE PROPRIETARY INFORMATION OF VALMONT INDUSTRIES AND CONSIDERED A TRADE SECRET. ANY USE OR DISCLOSURE WITHOUT THE CONSENT OF VALMONT INDUSTRIES IS STRICTLY PROHIBITED.

CPD NO.	DRAWN BY	ENG. APPROVAL
SP1	SDR 8/13/2025	8/14/2025
CLASS	DRAWING USAGE	CHECKED BY
87	CUSTOMER	JET 8/14/2025

PART NO.	FLX4-SD
DWG. NO.	MSFAA-FLX4

NOTE:
 ENSURE EQUAL DISTANCE
 BETWEEN BRACKETS "X"
 AND AT 120° APART FOR PLATFORMS.

DEVIATION IS ACCEPTABLE
 WITH EOR APPROVAL.



TOLERANCE NOTES

TOLERANCES ON DIMENSIONS, UNLESS OTHERWISE NOTED ARE:
 SAWED, SHEARED AND GAS CUT EDGES ($\pm 0.030"$)
 DRILLED AND GAS CUT HOLES ($\pm 0.030"$) - NO CONING OF HOLES
 LASER CUT EDGES AND HOLES ($\pm 0.010"$) - NO CONING OF HOLES
 BENDS AND ANGLES ARE $\pm 1/2$ DEGREE
 ALL OTHER MACHINING ($\pm 0.030"$)
 ALL OTHER ASSEMBLY ($\pm 0.060"$)

PATENT INFORMATION: WWW.SITEPRO1.COM/PATENTS

PROPRIETARY NOTE:
 THE DATA AND TECHNIQUES CONTAINED IN THIS DRAWING ARE PROPRIETARY INFORMATION OF VALMONT INDUSTRIES AND CONSIDERED A TRADE SECRET. ANY USE OR DISCLOSURE WITHOUT THE CONSENT OF VALMONT INDUSTRIES IS STRICTLY PROHIBITED.

DESCRIPTION
MONOPOLE 4 SECTOR FLEX COLLAR ATTACHMENT ASSEMBLY

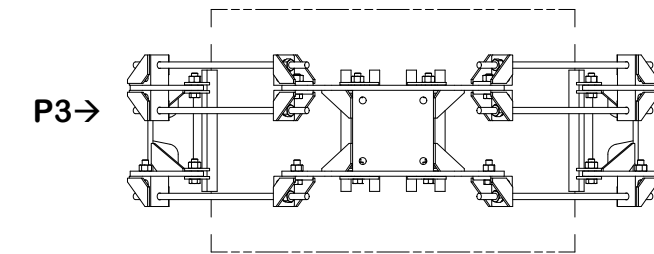
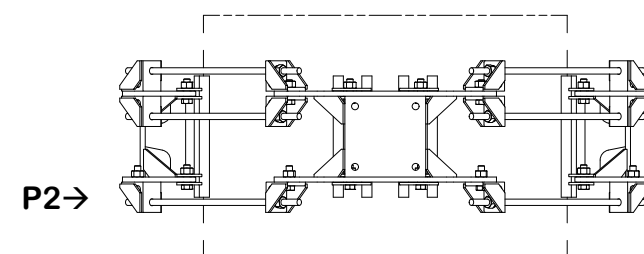
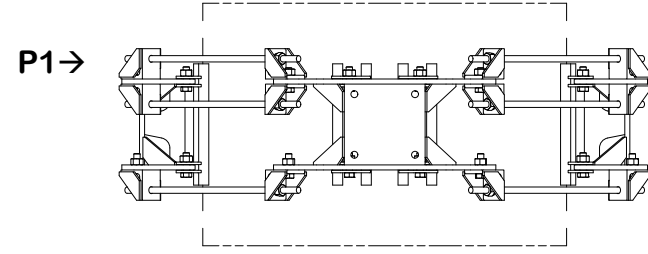
CPD NO. SP1	DRAWN BY SDR 8/13/2025	ENG. APPROVAL 8/14/2025
CLASS 87	SUB 03	DRAWING USAGE CUSTOMER
	CHECKED BY JET 8/14/2025	



Engineering Support Team:
 sp1engineering@valmont.com

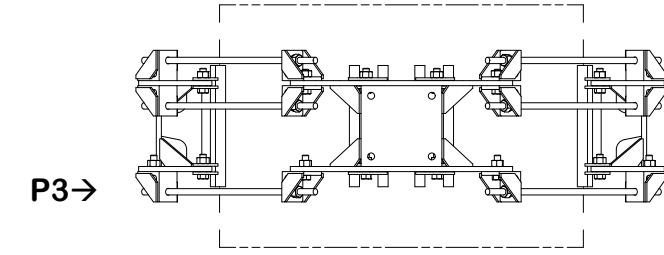
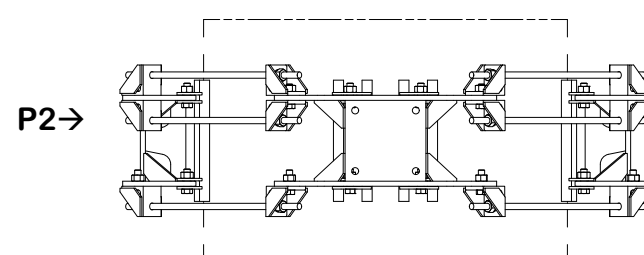
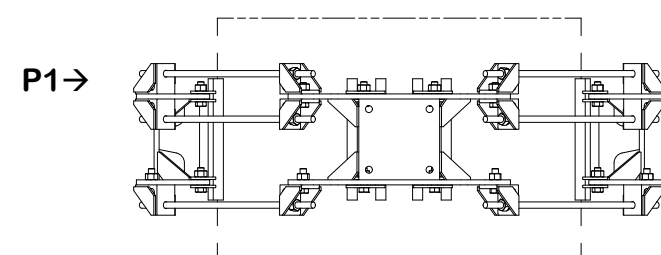
PART NO. FLX4-SD
DWG. NO. MSFAA-FLX4

INSTALL ORDER

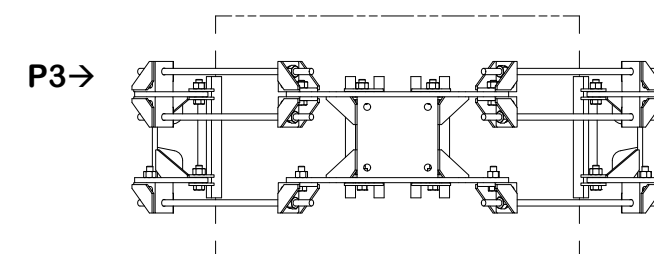
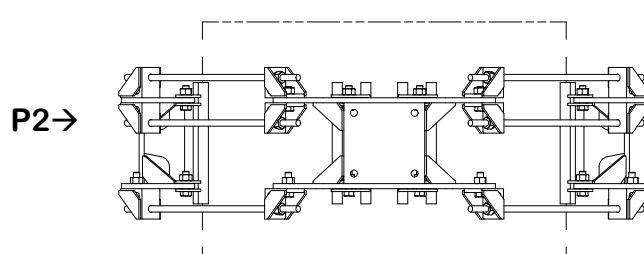
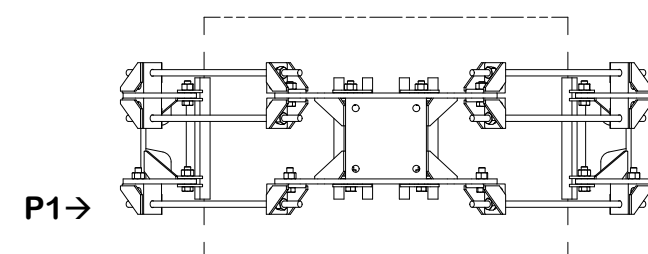


INITIAL TIGHTENING

NOTE:
DURING INITIAL TIGHTENING, P1 AND P2 MUST BE TIGHTENED FIRST
TO PULL THE UPPER CLAMP PLATES INTO FULL CONTACT WITH THE POLE.
ENSURE THE CLAMP MAKES TOP CONTACT BEFORE PROCEEDING WITH ANY ADDITIONAL TIGHTENING.



FINAL TIGHTENING



TOLERANCE NOTES

TOLERANCES ON DIMENSIONS, UNLESS OTHERWISE NOTED ARE:
 SAWED, SHEARED AND GAS CUT EDGES ($\pm 0.030"$)
 DRILLED AND GAS CUT HOLES ($\pm 0.030"$) - NO CONING OF HOLES
 LASER CUT EDGES AND HOLES ($\pm 0.010"$) - NO CONING OF HOLES
 BENDS AND ANGLES ARE $\pm 1/2$ DEGREE
 ALL OTHER MACHINING ($\pm 0.030"$)
 ALL OTHER ASSEMBLY ($\pm 0.060"$)

PATENT INFORMATION: WWW.SITEPRO1.COM/PATENTS

PROPRIETARY NOTE:
 THE DATA AND TECHNIQUES CONTAINED IN THIS DRAWING ARE PROPRIETARY INFORMATION OF VALMONT INDUSTRIES AND CONSIDERED A TRADE SECRET. ANY USE OR DISCLOSURE WITHOUT THE CONSENT OF VALMONT INDUSTRIES IS STRICTLY PROHIBITED.

DESCRIPTION
MONOPOLE 4 SECTOR FLEX COLLAR ATTACHMENT ASSEMBLY

CPD NO. SP1	DRAWN BY SDR 8/13/2025	ENG. APPROVAL 8/14/2025
CLASS 87	SUB 03	DRAWING USAGE CUSTOMER
CHECKED BY JET 8/14/2025		

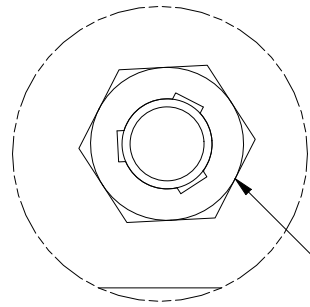
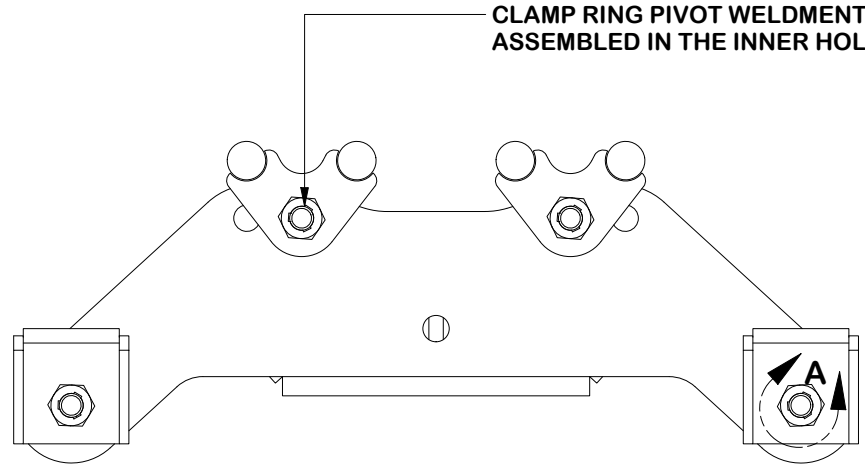


Engineering Support Team:
sp1engineering@valmont.com

PART NO. FLX4-SD
DWG. NO. MSFAA-FLX4

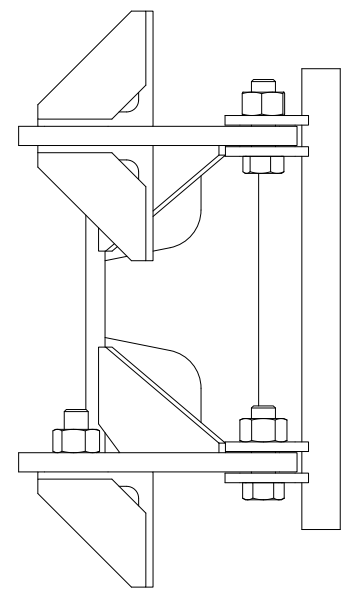
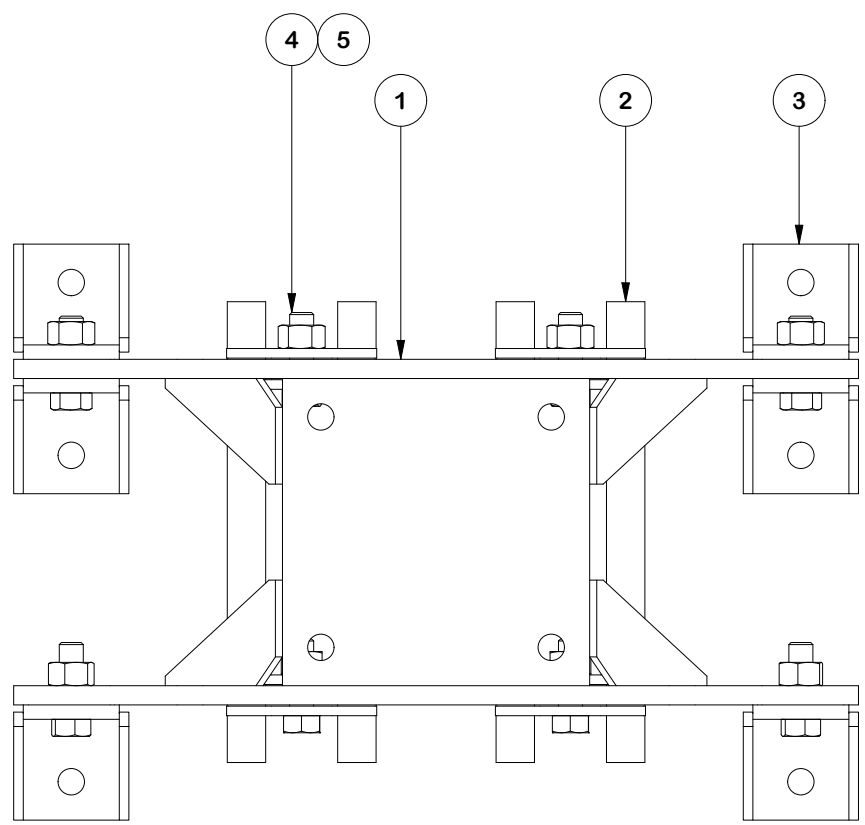
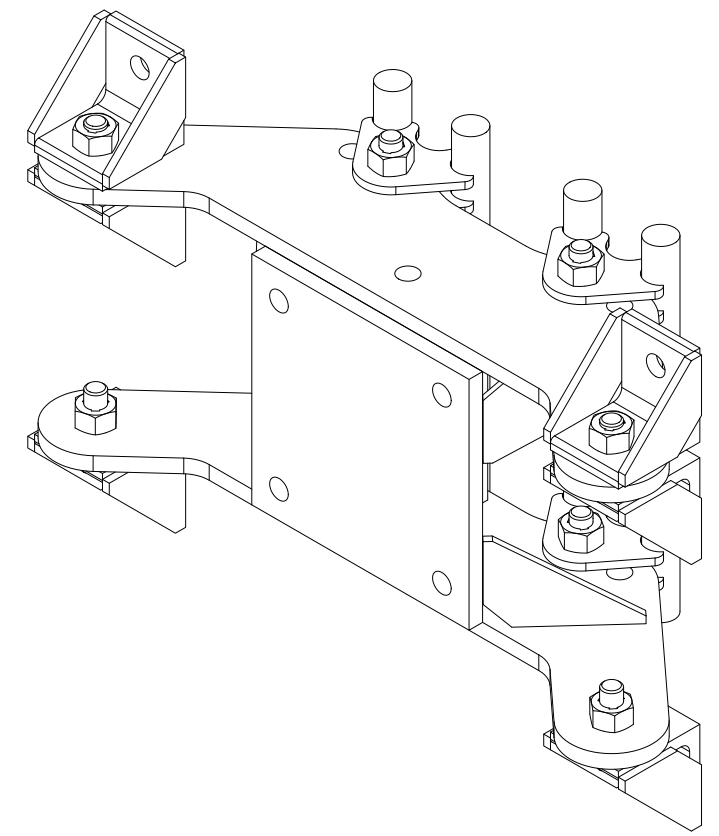
PARTS LIST					
ITEM	QTY	PART NO.	PART DESCRIPTION	UNIT WT.	NET WT.
1	1	X-CR-SDW	FLEXIBLE RING MOUNT	42.23	42.23
2	2	X-CR-PW12	12" CLAMP RING PIVOT WELDMENT	6.93	13.85
3	6	X-CR-AGW	ANGLE ON WELDMENT	2.20	13.18
4	8	G5802	5/8" x 2" HDG HEX BOLT GR5	0.27	2.16
5	8	G58TRI-LNUT	5/8" HDG HEAVY 2H TRI-LOCK NUT	0.14	1.10
TOTAL WT. #				72.51	

NOTE:
CLAMP RING PIVOT WELDMENT SHOULD BE ASSEMBLED IN THE INNER HOLE OF WELDMENT



DETAIL A

NOTE:
FOR TRI-LOCKNUT INSTALLATION, ENSURE THE GROOVED SIDE IS ORIENTED AWAY FROM BOLT HEAD



FINISH:
HOT DIP GALVANIZED.

TOLERANCE NOTES
 TOLERANCES ON DIMENSIONS, UNLESS OTHERWISE NOTED ARE:
 SAWED, SHEARED AND GAS CUT EDGES ($\pm 0.030"$)
 DRILLED AND GAS CUT HOLES ($\pm 0.030"$) - NO CONING OF HOLES
 LASER CUT EDGES AND HOLES ($\pm 0.010"$) - NO CONING OF HOLES
 BENDS AND ANGLES ARE $\pm 1/2$ DEGREE
 ALL OTHER MACHINING ($\pm 0.030"$)
 ALL OTHER ASSEMBLY ($\pm 0.060"$)

PATENT INFORMATION: WWW.SITEPRO1.COM/PATENTS

DESCRIPTION
MONOPOLE 4 SECTOR FLEX COLLAR ATTACHMENT ASSEMBLY

CPD NO. SP1	DRAWN BY SDR 8/13/2025	ENG. APPROVAL 8/14/2025
CLASS 87	SUB 03	DRAWING USAGE CUSTOMER
CHECKED BY JET 8/14/2025		

SITE PRO 1
 A valmont COMPANY

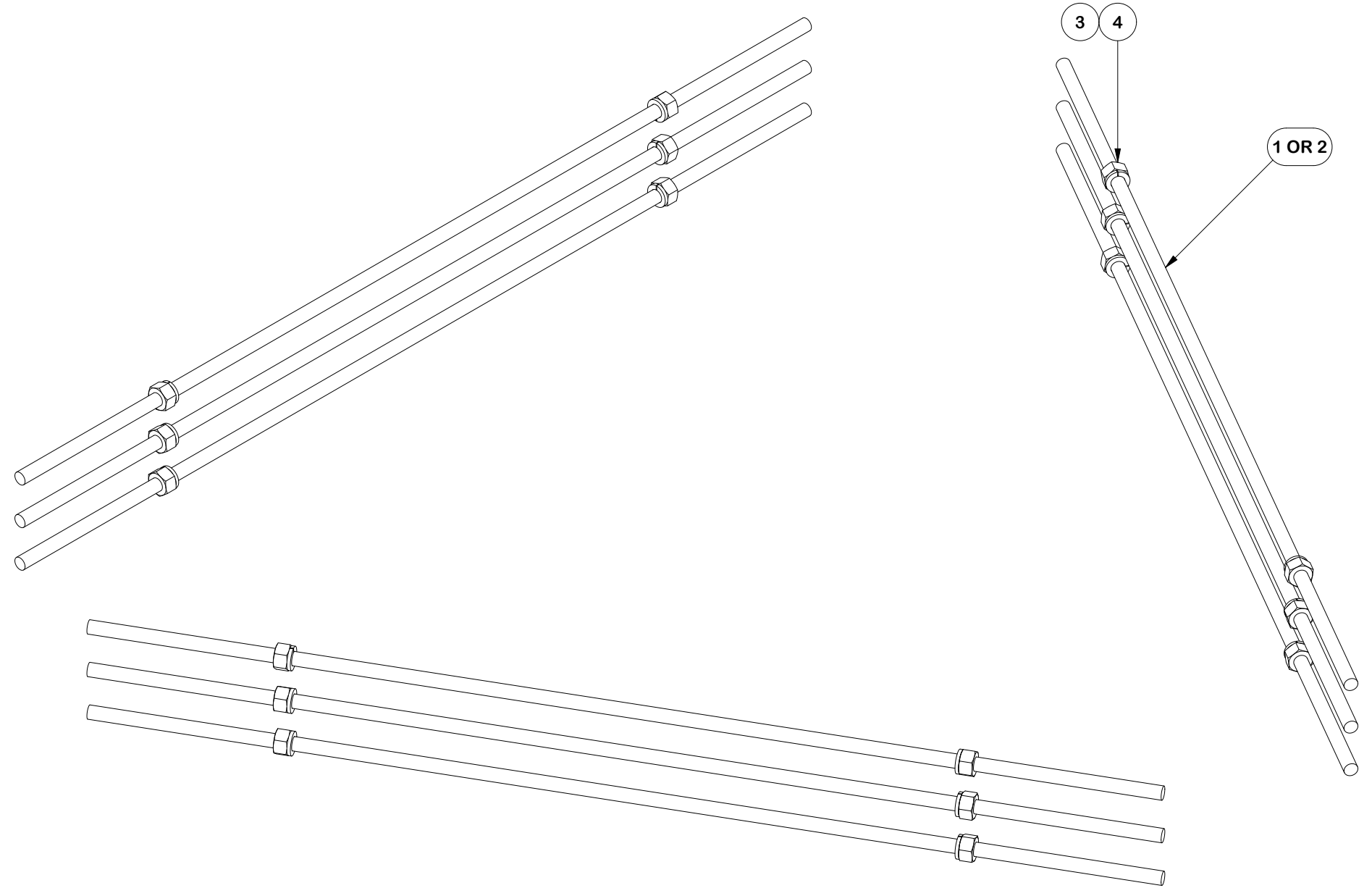
Engineering Support Team:
 sp1engineering@valmont.com

PART NO.
FLX-SDSS

DWG. NO.
MSFAA-FLX4

PROPRIETARY NOTE:
 THE DATA AND TECHNIQUES CONTAINED IN THIS DRAWING ARE PROPRIETARY INFORMATION OF VALMONT INDUSTRIES AND CONSIDERED A TRADE SECRET. ANY USE OR DISCLOSURE WITHOUT THE CONSENT OF VALMONT INDUSTRIES IS STRICTLY PROHIBITED.

PARTS LIST					
ITEM	QTY	PART NO.	PART DESCRIPTION	UNIT WT.	NET WT.
1	9	G58R-48	5/8" X 48" THREADED ROD (HDG.)	4.43	39.84
2	9	G58R-24	5/8" X 24" THREADED ROD (HDG.)	2.21	19.92
3	18	G58LW	5/8" HDG LOCKWASHER	0.03	0.47
4	18	G58NUT	5/8" HDG HEAVY 2H HEX NUT	0.13	2.34
TOTAL WT. #				62.57	



TOLERANCE NOTES

TOLERANCES ON DIMENSIONS, UNLESS OTHERWISE NOTED ARE:
 SAWED, SHEARED AND GAS CUT EDGES ($\pm 0.030"$)
 DRILLED AND GAS CUT HOLES ($\pm 0.030"$) - NO CONING OF HOLES
 LASER CUT EDGES AND HOLES ($\pm 0.010"$) - NO CONING OF HOLES
 BENDS AND ANGLES ARE $\pm 1/2$ DEGREE
 ALL OTHER MACHINING ($\pm 0.030"$)
 ALL OTHER ASSEMBLY ($\pm 0.060"$)

PATENT INFORMATION: WWW.SITEPRO1.COM/PATENTS

PROPRIETARY NOTE:
 THE DATA AND TECHNIQUES CONTAINED IN THIS DRAWING ARE PROPRIETARY INFORMATION OF VALMONT INDUSTRIES AND CONSIDERED A TRADE SECRET. ANY USE OR DISCLOSURE WITHOUT THE CONSENT OF VALMONT INDUSTRIES IS STRICTLY PROHIBITED.

DESCRIPTION
MONOPOLE 4 SECTOR FLEX COLLAR ATTACHMENT ASSEMBLY

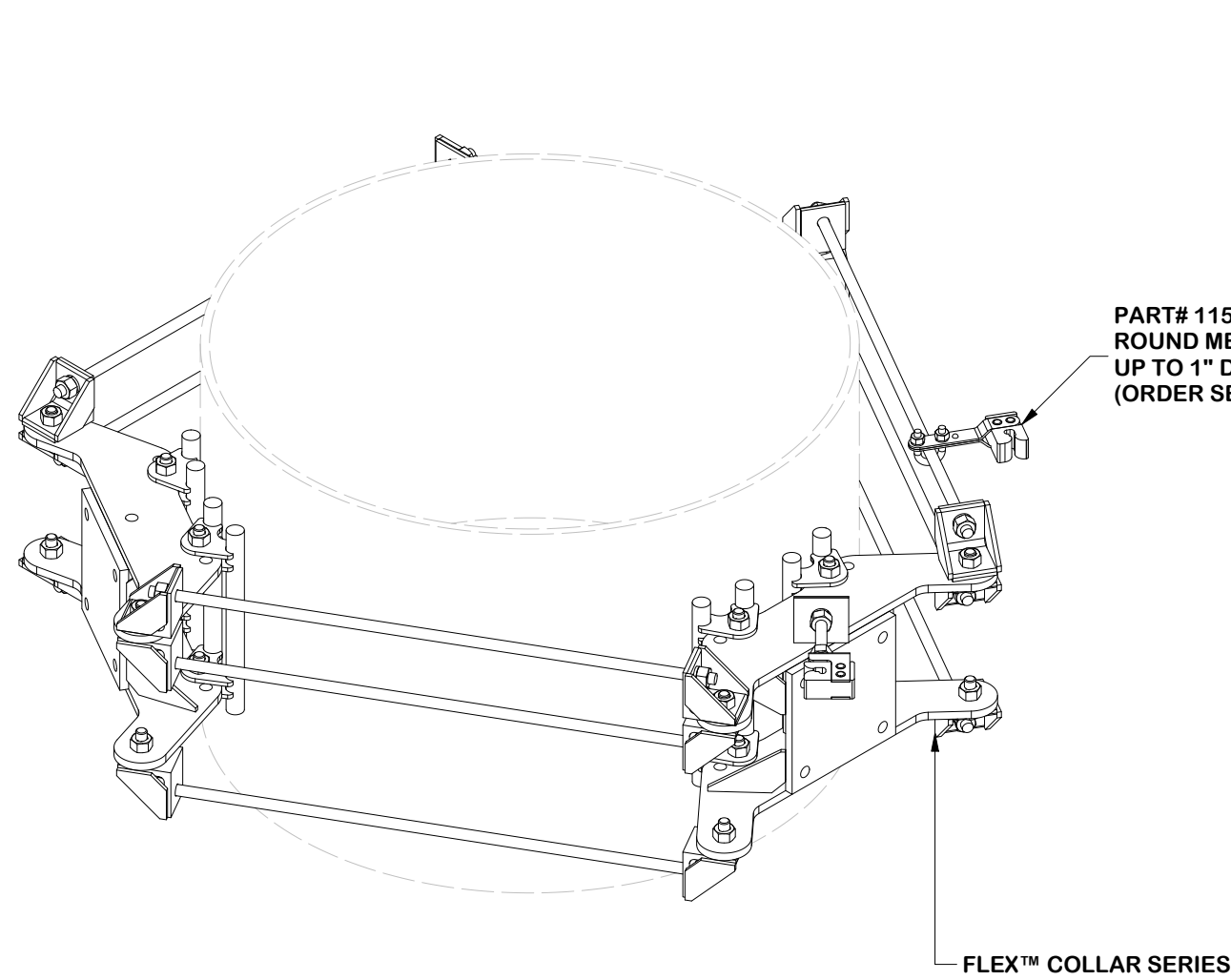


Engineering Support Team:
 sp1engineering@valmont.com

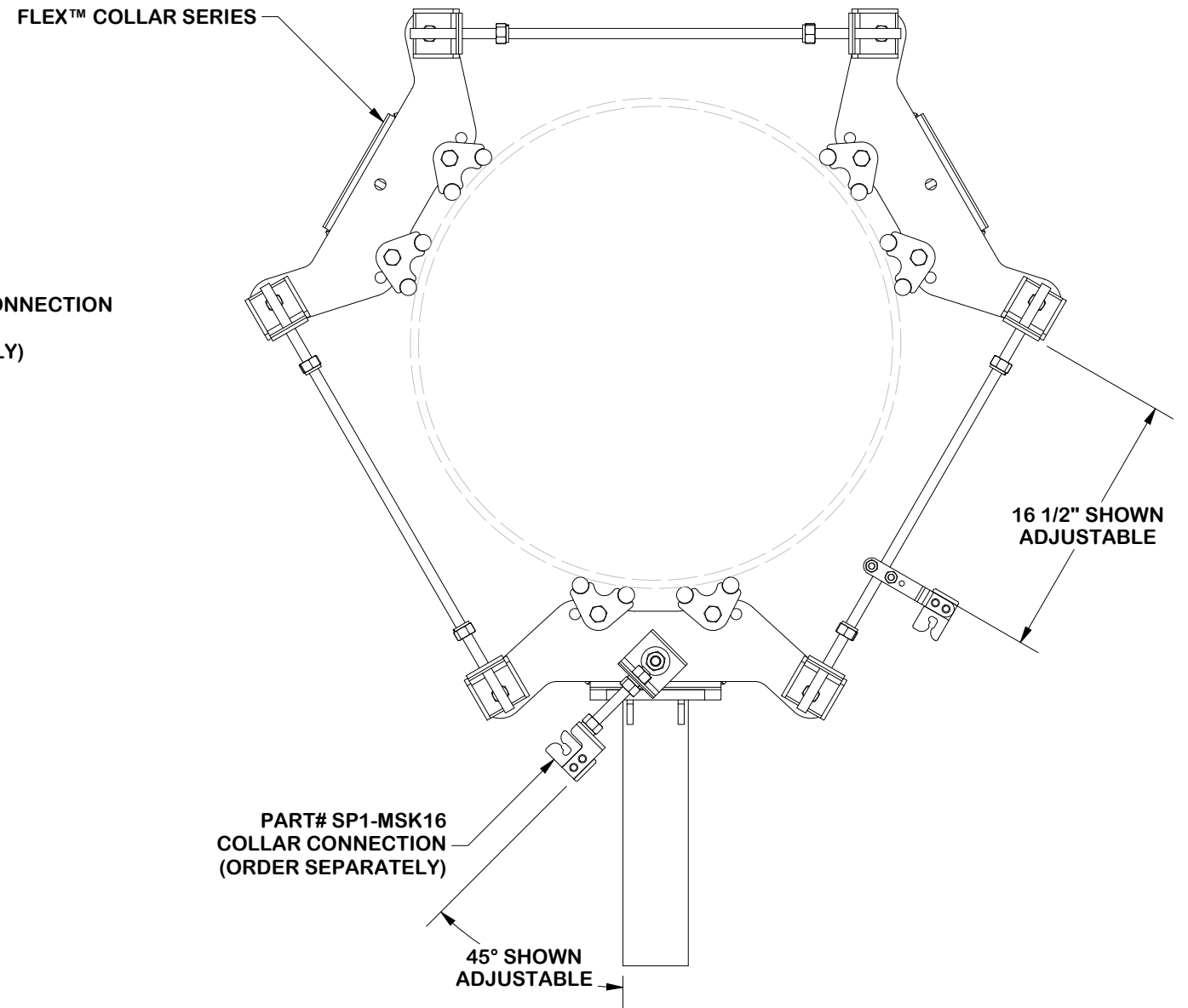
CPD NO. SP1	DRAWN BY SDR 8/13/2025	ENG. APPROVAL 8/14/2025
CLASS 87	SUB 03	DRAWING USAGE CUSTOMER
CHECKED BY JET 8/14/2025		

PART NO. LWRM-HDWE	PAGE 6 OF 8
DWG. NO. MSFAA-FLX4	

CABLE GUIDE REFERENCE



ISO VIEW



TOP VIEW

TOLERANCE NOTES

TOLERANCES ON DIMENSIONS, UNLESS OTHERWISE NOTED ARE:
 SAWED, SHEARED AND GAS CUT EDGES ($\pm 0.030"$)
 DRILLED AND GAS CUT HOLES ($\pm 0.030"$) - NO CONING OF HOLES
 LASER CUT EDGES AND HOLES ($\pm 0.010"$) - NO CONING OF HOLES
 BENDS AND ANGLES ARE $\pm 1/2$ DEGREE
 ALL OTHER MACHINING ($\pm 0.030"$)
 ALL OTHER ASSEMBLY ($\pm 0.060"$)

PATENT INFORMATION: WWW.SITEPRO1.COM/PATENTS

PROPRIETARY NOTE:
 THE DATA AND TECHNIQUES CONTAINED IN THIS DRAWING ARE PROPRIETARY INFORMATION OF VALMONT INDUSTRIES AND CONSIDERED A TRADE SECRET. ANY USE OR DISCLOSURE WITHOUT THE CONSENT OF VALMONT INDUSTRIES IS STRICTLY PROHIBITED.

DESCRIPTION

MONOPOLE 4 SECTOR FLEX COLLAR ATTACHMENT ASSEMBLY

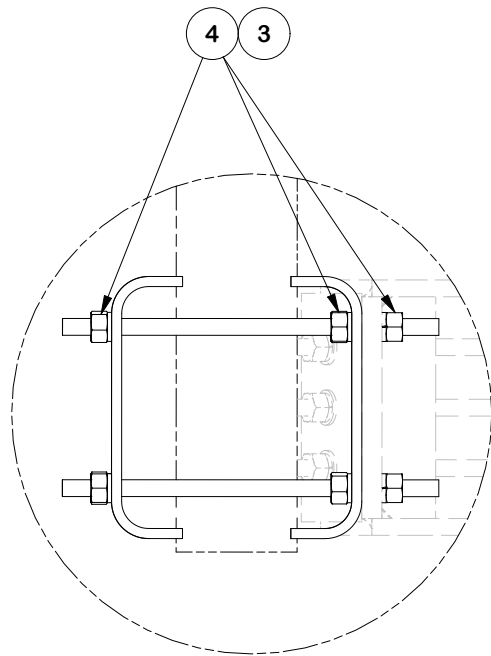
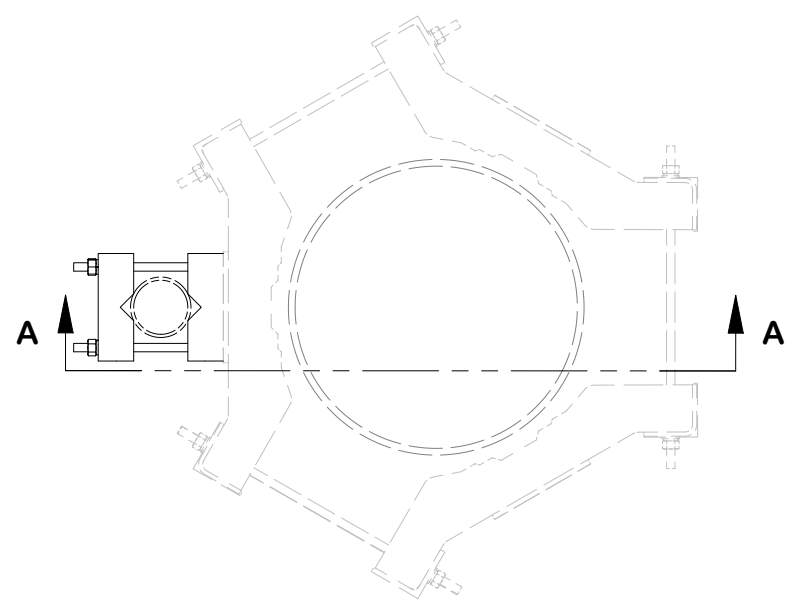
CPD NO. SP1	DRAWN BY SDR 8/13/2025	ENG. APPROVAL 8/14/2025
CLASS 87	SUB 03	DRAWING USAGE CUSTOMER
	CHECKED BY JET 8/14/2025	



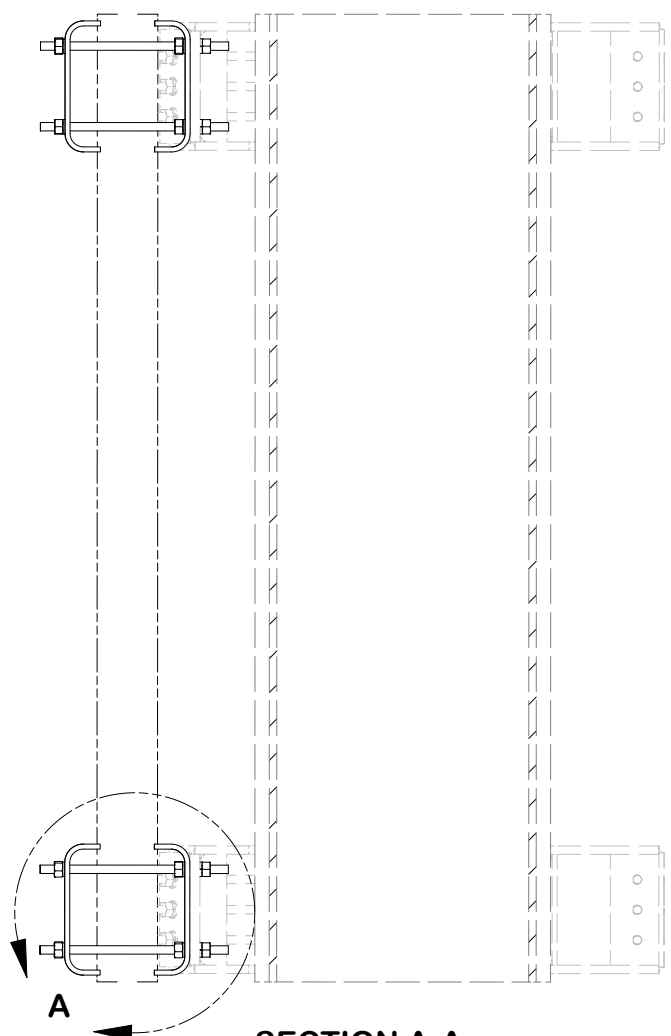
Engineering Support Team:
 sp1engineering@valmont.com

A valmont COMPANY

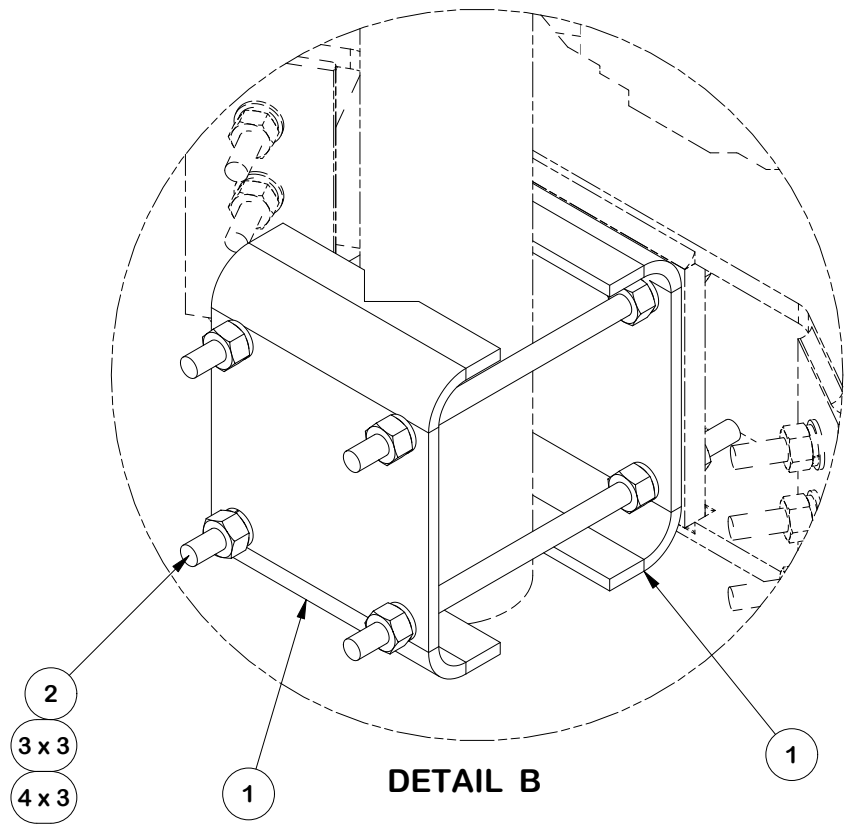
PART NO. CABLE GUIDE REF
DWG. NO. MSFAA-FLX4



DETAIL A

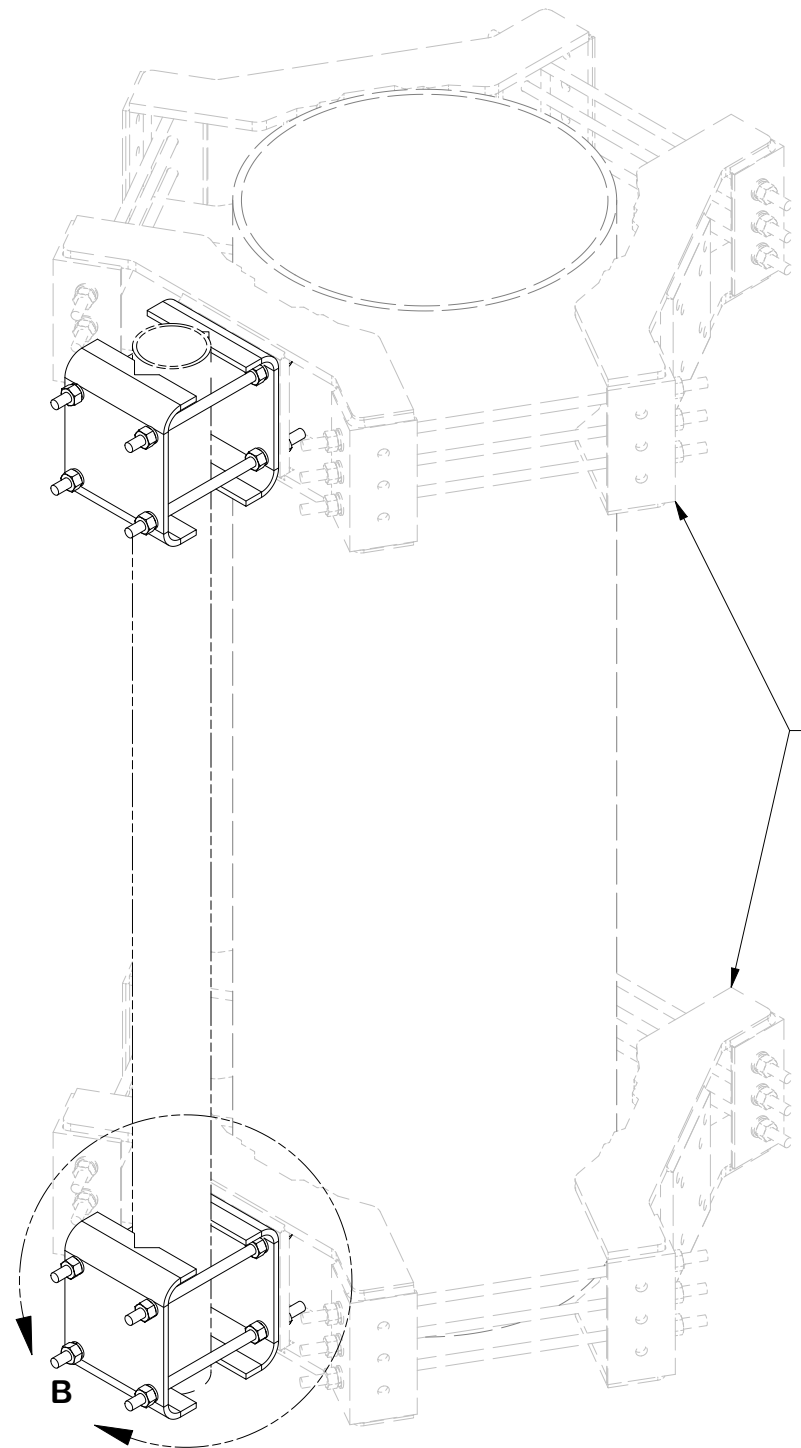


SECTION A-A



DETAIL B

PARTS LIST						
ITEM	QTY	PART NO.	PART DESCRIPTION	LENGTH	UNIT WT.	NET WT.
1	4	X-214130	3/8" x 8" FLAT STOCK (A36)	13 3/16 in	11.56	46.26
2	8	G58R-14	5/8" x 14" THREADED ROD (HDG.)		1.22	9.76
3	24	G58LW	5/8" HDG LOCKWASHER		0.03	0.63
4	24	G58NUT	5/8" HDG HEAVY 2H HEX NUT		0.13	3.12
TOTAL WT. #						57.05



FLX3-SD / FLX4-SD
FOR POLES 14" TO 45" DIA.

OR

LWRM UNIVERSAL RING MOUNT
FOR POLES 12" TO 45" DIA.

OR

UGLM MINI RING MOUNT
FOR POLES 10-1/2" TO 28" DIA.
(ORDER SEPARATELY)

TOLERANCE NOTES

TOLERANCES ON DIMENSIONS, UNLESS OTHERWISE NOTED ARE:
 SAWED, SHEARED AND GAS CUT EDGES ($\pm 0.030"$)
 DRILLED AND GAS CUT HOLES ($\pm 0.030"$) - NO CONING OF HOLES
 LASER CUT EDGES AND HOLES ($\pm 0.010"$) - NO CONING OF HOLES
 BENDS AND ANGLES ARE $\pm 1/2$ DEGREE
 ALL OTHER MACHINING ($\pm 0.030"$)
 ALL OTHER ASSEMBLY ($\pm 0.060"$)

PATENT INFORMATION: WWW.SITEPRO1.COM/PATENTS

PROPRIETARY NOTE:
 THE DATA AND TECHNIQUES CONTAINED IN THIS DRAWING ARE PROPRIETARY INFORMATION OF VALMONT INDUSTRIES AND CONSIDERED A TRADE SECRET. ANY USE OR DISCLOSURE WITHOUT THE CONSENT OF VALMONT INDUSTRIES IS STRICTLY PROHIBITED.

DESCRIPTION
MONOPOLE 4 SECTOR FLEX COLLAR ATTACHMENT ASSEMBLY



Engineering Support Team:
 sp1engineering@valmont.com

REV	DESCRIPTION OF REVISIONS	CPD	BY	DATE
B		SP1	ADB	12/11/2025
A	UPDATED TEMPLATE	SP1	NSP	11/12/2024

CPD NO.		DRAWN BY		ENG. APPROVAL	
SP1		SDR 8/13/2025		8/14/2025	
CLASS	SUB	DRAWING USAGE		CHECKED BY	
87	03	CUSTOMER		JET 8/14/2025	

PART NO.	DWG. NO.
FMA2	MSFAA-FLX4